



**LI-COR®**

# **CARBON NODE**

**SCALABLE MONITORING. UNPRECEDENTED SIMPLICITY.**

# FAST, ACCURATE ANSWERS TO YOUR CARBON QUESTIONS

Questions about carbon flux in an ecosystem have always come easier than the answers. The new Carbon Node from LI-COR is here to change that. This all-in-one, next-gen Eddy Covariance (EC) carbon monitoring solution provides researchers with direct, actionable measurements that you can be confident in. As a trusted leader in EC systems, LI-COR has created a method of EC measurement that's easy, fast, and scalable.

Can fertilization and irrigation both improve yield and sequester more carbon at the same time?

How much carbon is your wetland sequestering?

Are government or corporate sustainability initiatives having the intended effect of lowering carbon emissions at the local level?





### EASY SOURCING AND SETUP

When you purchase the Carbon Node, everything you need to collect and analyze data arrives in just three boxes. And each unit can be set up by a single person in as little as 30 minutes. The new user interface even makes maintenance simple. The Carbon Node has built-in diagnostics, and no special training is required.

### FAST ACCESS TO ACTIONABLE DATA

Activate your Carbon Node, connect to the cloud, and you'll begin receiving actionable data within minutes. With LI-COR automatic data processing and QA/QC, no manual analysis is necessary, saving you valuable time.

### SCALABLE OPERATIONS

The Carbon Node opens up new opportunities for scalability that can increase the accuracy of your research. With a lower cost than traditional EC systems and requiring significantly less investment in setup, data processing, and maintenance, you can place and manage multiple Carbon Nodes across an ecosystem. You can also use it in conjunction with traditional EC instruments to create a precise, distributed EC site.

#### LI-COR CLOUD

### Unmatched, Easy-to-Use Software



Through LI-COR Cloud, you'll have real-time access to Carbon Node data from anywhere. Your first year of LI-COR Cloud access is included with your Carbon Node and starts at just \$650/year after that.

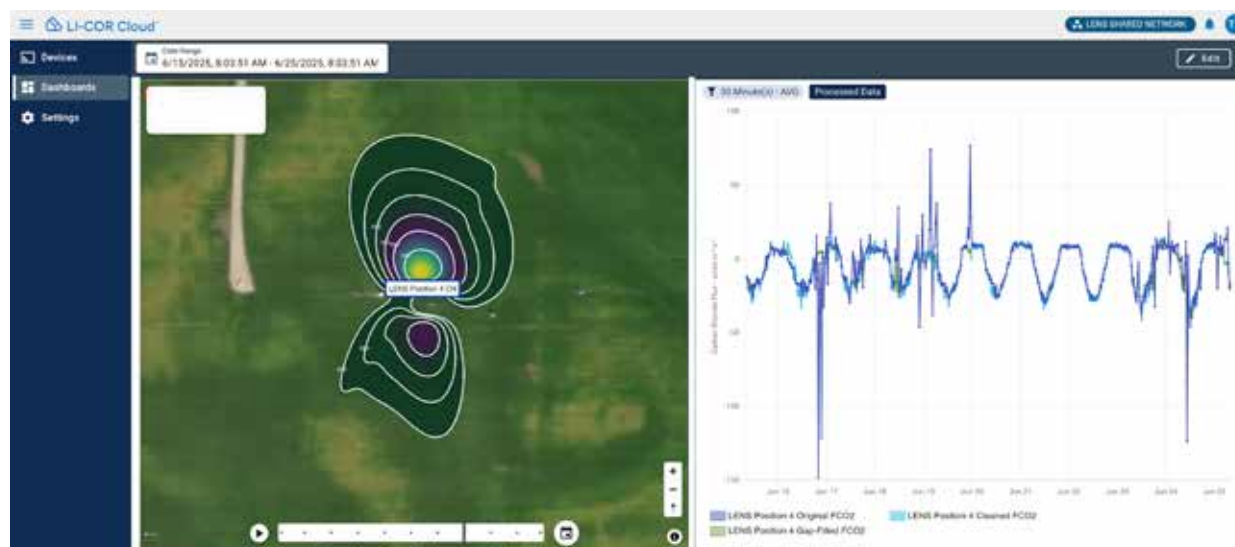
## EXPLORE THE CARBON NODE

Learn about the Carbon Node's applications, functionality, and request a quote at [licor.com/products/carbon-node](https://licor.com/products/carbon-node).



## Actionable, Defensible Data

The LI-720 Carbon Flux Sensor applies the EC method to measurements of carbon dioxide concentration at 10 Hz, providing fully processed results every 30 minutes. When compared with traditional EC, the Carbon Node reports carbon dioxide flux with similar accuracy, but with a more streamlined solution.



Data from a Carbon Node is shown with flux footprint climatology (left) and cleaned / gap filled carbon dioxide flux data. (right)

## Specifications

### CO<sub>2</sub> MEASUREMENT

**Calibration Range:** 0 to 1500  $\mu\text{mol mol}^{-1}$

**Accuracy:** Within 1.5% of reading

**Zero Drift (per °C):**

- $\pm 0.15$  ppm
- $\pm 0.3$  ppm maximum

**RMS Noise ( @ 400  $\mu\text{mol mol}^{-1}$  CO<sub>2</sub>):**  
@10 Hz: 1.0 ppm

**Direct Sensitivity to H<sub>2</sub>O (mol CO<sub>2</sub> mol<sup>-1</sup> H<sub>2</sub>O):**

- $\pm 2.00\text{E-}05$
- $\pm 4.00\text{E-}05$  maximum

### H<sub>2</sub>O MEASUREMENT

**Calibration Range:**

- 0 to 60 mmol mol<sup>-1</sup>

**Accuracy:** Within 1.5% of reading

**Zero Drift (per °C):**

- $\pm 0.03$  mmol mol<sup>-1</sup>
- $\pm 0.05$  mmol mol<sup>-1</sup> maximum

**RMS Noise ( @ 10 mmol mol<sup>-1</sup> H<sub>2</sub>O):**  
@10 Hz: 0.05 mmol mol<sup>-1</sup>

**Direct Sensitivity to CO<sub>2</sub> (mol H<sub>2</sub>O/mol CO<sub>2</sub>):**

- $\pm 0.02$
- $\pm 0.05$  maximum

### WIND MEASUREMENT

**Wind Speed Measurement Axes:**  
U, V, W

**Measurement Range:**  
0 – 30 m s<sup>-1</sup> (horizontal wind conditions)

**Offset at Zero Wind (W axis):**  
 $\pm 0.06$  m s<sup>-1</sup>

**RMS Noise (W axis):**  
<0.1 m s<sup>-1</sup> @ 5 m s<sup>-1</sup>, <0.15 m s<sup>-1</sup> @ 15 m s<sup>-1</sup>

**Sonic Temperature Accuracy:**  
 $\pm 0.7^\circ\text{C}$  maximum offset at 20°C

### BIOMET MEASUREMENT

**Photosynthetic Photon Flux Density:**

- Range: 0-3000  $\mu\text{mol m}^{-2} \text{s}^{-1}$
- Accuracy:  $\pm 5\%$  of reading
- Cosine Correction: Corrected up to 75° angle of incidence.

**Biomet Air Temperature:**

- Range: -40 – 60°C
- Accuracy:  $\pm 1.5^\circ\text{C}$  – no load conditions

**Atmospheric Pressure:**

- Range: -25° C to +50° C
- Accuracy:  $\pm .2$  kPa

**Biomet RH:**

- Range: 0-100% – non-condensing
- Accuracy:  $\pm 1\%$

### ELECTRONICS

**Communication Interfaces:**

- SDI-12
- RS-232 (raw 10Hz data)
- USB micro

**Integrated GPS:**

- Provides location and precision time, including for edge flux processing.
- Supports GPS Time Output (GPST)

**Magnetometer:**

- Output instrument orientation relative to magnetic north

**Accelerometer:**

- Output instrument tilt

### EMBEDDED SOFTWARE

**Software Updates:**

Capable of software updates via USB

### POWER REQUIREMENTS

**Voltage:**

- 9 to 33 VDC nominally; Can be powered from a standard USB port (2.0 or newer) for calibration and firmware updates. Outdoor operation from a 5 V USB power supply is not supported.

**Power Consumption:**

- 1.5 W